

1,292G/T • 5,000PS
Offshore multi-purpose
work vessel

KAIYU



OOC

Main Details

Year Built	March 2005	Length	62.4m	- O. A.
Class	NK (NS MNS) Ice Class ID		54.4m	- P. P.
Official No.	140136	Breadth	14.0m	
IMO No.	9344576	Depth	6.00m	
Call sign	7JAQ	Draught	5.00m	
Service of Ship	Tug and Work Boat	Tonnage	1,292t	- gross tonnage
Navigation Area	Greater Coasting Area A3 International Voyage		1,682t	- international tonnage
		Complement	40 persons	(Crew 15, Passengers 12, Other Persons 13)

Engine and Propulsion

Main Engine	5,000PS Niigata 6MG28HX 1,838kW(2,500PS) ×2	Bollard Pull	604kN (61.6t) - maximum 595kN (60.7t) - continuous, max
Propulsion	CPP in Kort nozzle ×2	Speed	13.5kts - maximum 11kts - at cruise
Generator	Shaft Generator 1,600kVA ×2 Main Generator 350kVA ×2	Bow Thruster	CPP type 79.4kN (8.1t) ×2
		Stern Thruster	CPP type 79.4kN (8.1t) ×1

Navigation, Radio Equipment and Communication

DPS (DP2) Auto Pilot DGPS	GMDSS (A1, A2, A3)
Doppler log Magnet Compass Gyro Compass	VHF Radiotelephone×2 2-way Radiotelephone×3
InmarsatFB Weather FAX	MF/HF Radiotelephone (DSC, NBDP) Inmarsat C
Echo Sounder (JRC JFE-582, SIMRAD EA600 KONGBERG EM302)	EPIRB SART×2 NAVTEX AIS Rader×2
Doppler Current Meter (JRC JLN-652)	Maritime Telephone / Fax 090-3023-7661 / 03-6888-1343
	INMARSAT Telephone 001-010-870-77327 - 2096
	/Fax 001-010-870-78327 - 4997
	E-mail kaiyu@ooc ltd.jp

Deck Equipment

Anchor Handling & Towing Winch	980kN (100t) - 6m/min 490kN (50t) - 12m/min 117.6kN (12t) - 30m/min 1,960kN (200t) - Brake	Stern Roller	3.05m×1.5m dia SWL 980kN (100t)
Tugger Winch ×2	98kN (10t) - 11m/min 49kN (5t) - 22m/min 147kN (15t) - Brake	Deck Crane	29.4kN (3t) Slewing Radius - 1.8m~14m Maximum Hoisting Lift - 30m
Capstan ×2	98kN (10t) - 11m/min 49kN (5t) - 22m/min	Mooring Equipment	AC-14 type Anchor 1,740kg ×2 Stud Link Chain φ38mm×220m ×2 Windlass Chain Wheel - 98kN(10t) Anchor Drum - 98kN(10t) Warping Drum - 98kN(10t)

Tank and Deck Capacity

Fuel Tank	960m ³	Ballast Tank	180m ³
Fresh Water Tank	410m ³	Brine Tank	52m ³
Bulk Tank	140m ³ (35m ³ ×4)	Free Deck Space	310.5m ² (27m×11.5m)
Drill Water Tank	340m ³	Deck Cargo	312t

Others

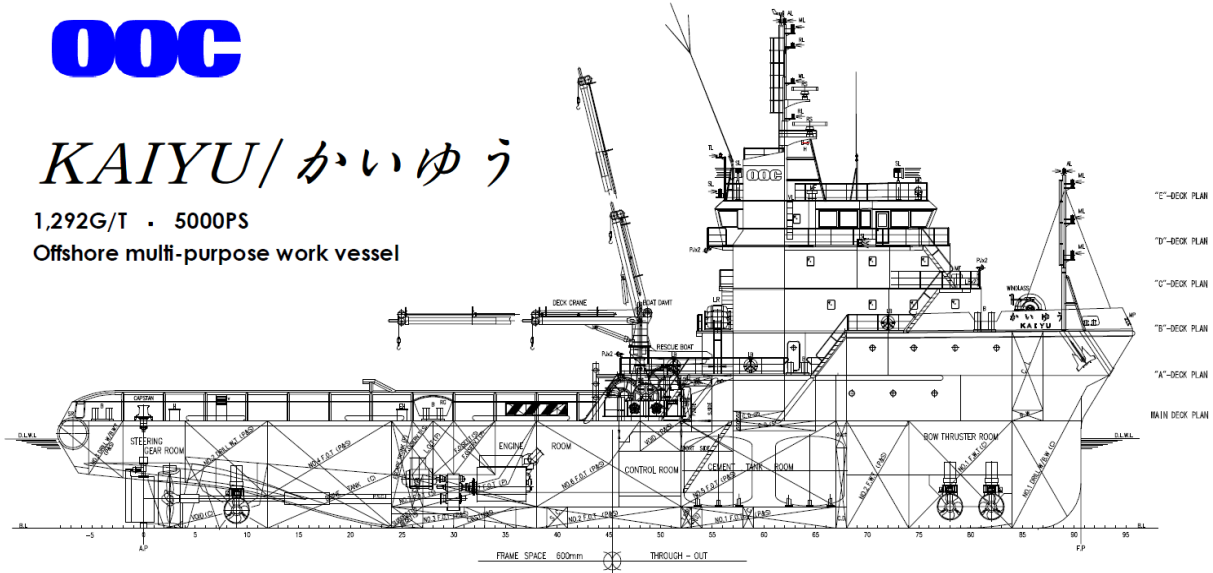
Shark Jaw S.W.L. 300t Max. 4-1/2" Chain

OOC

KAIYU/かいゆう

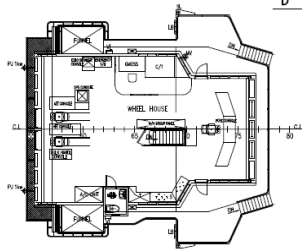
1,292G/T · 5000PS

Offshore multi-purpose work vessel

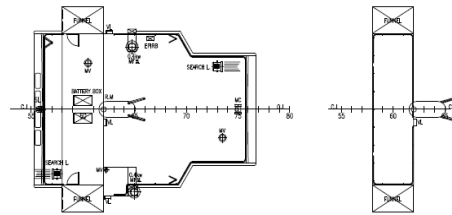


"E"-DECK PLAN
 "D"-DECK PLAN
 "C"-DECK PLAN
 "B"-DECK PLAN
 "A"-DECK PLAN
 MAIN DECK PLAN

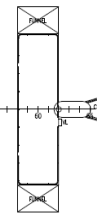
"D"-DECK PLAN



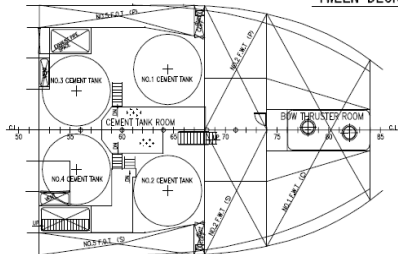
"E"-DECK PLAN



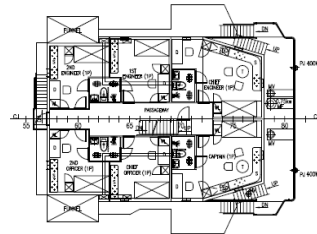
MONITOR STAGE PL



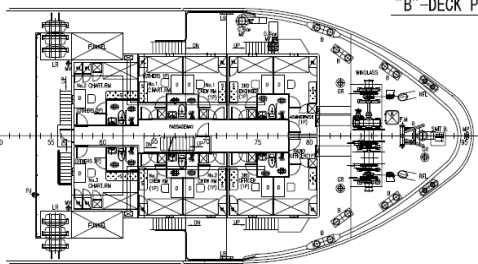
TWEEN DECK PLAN



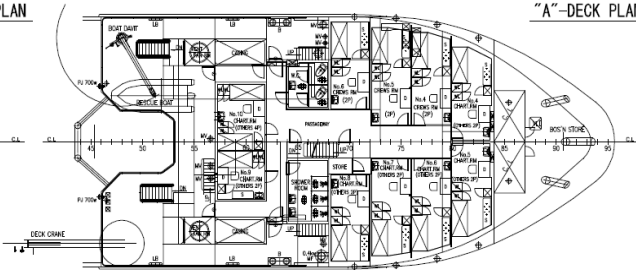
"C"-DECK PLAN



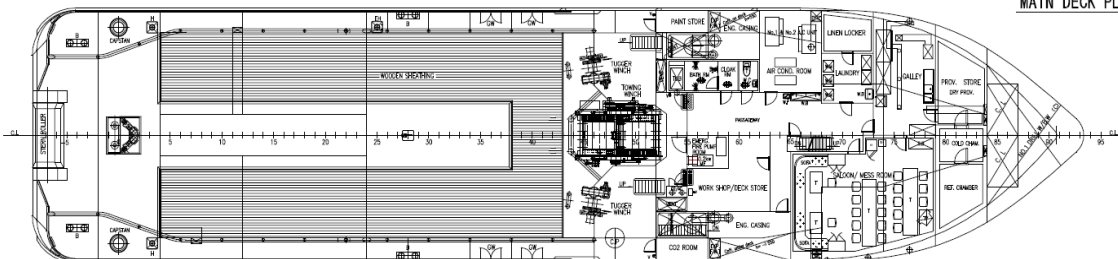
"B"-DECK PLAN



"A"-DECK PLAN



MAIN DECK PLAN



TANK TOP PLAN

