

189G/T • 1,200PS  
Work / Survey vessel

# KAIKO MARU No.8

**OOC**



## Main Details

<b>Year Built</b>	May 1997	<b>Length</b>	40.50m	- O. A.
<b>Class</b>	JG		32.93m	- P. P.
<b>Official No.</b>	135050	<b>Breadth</b>	7.60m	
<b>Call sign</b>	JIVH	<b>Depth</b>	3.20m	
<b>Service of Ship</b>	Survey and Work boat	<b>Draught</b>	2.90m	
<b>Navigation Area</b>	Greater Coasting Area A2 Navtex Area Only	<b>Tonnage</b>	189t	- gross tonnage
		<b>Complement</b>	37 persons (Crew 15, Other Persons 22)	

## Engine and Propulsion

<b>Main Engine</b>	1,200PS × 900rpm Daihatsu 6DLM-22FSL × 1	<b>Speed</b>	13.48kt - maximum 11.5kts - at cruise
<b>Propulsion</b>	CPR × 1	<b>Bow Thruster</b>	CPP type 13.72kN (1.4t) × 1
<b>Generator</b>	Main Generator 180kVA × 2	<b>Stern Thruster</b>	CPP type 13.72kN (1.4t) × 1

## Navigation, Radio Equipment and Communication

Joy stick control	GMDSS (A1, A2 Area)
Auto Pilot GPS DGPS Magnet Compass	VHF Radiotelephone 2-way Radiotelephone
Gyro Compass	EPIRB SART NAVTEX Rader
Scientific Echo Sounder (FURUNO FCV-780)	Maritime Telephone / Fax 090-3023-3553 / 03-6888-5432
Acoustic Doppler Current Profiler (FURUNO CI-20-H)	E-mail kaiko8@ooc ltd.jp

## Deck Equipment

<b>Deck Crane × 1</b>	8.0kN (0.8t) Slewing Radius ~10.67m	<b>Mooring Equipment</b>	Stockless type Bow Anchor 370kg × 2 Stock type Anchor 115kg × 1 Chain φ22mm×150m × 2 Windlass - 19.6kN (2t)
<b>Capstan × 1</b>	14.7kN (1.5t) - 13m/min		
<b>Winch × 1</b>	29.4kN (3t) - 100m/min		
<b>Tugger Winch × 2</b>	29.4kN (3t) - 30m/min		
<b>Electric Winch × 2</b>	4.4kN (0.45t) - 30m/min		

## Tank and Deck Capacity

<b>Fuel Tank</b>	91.66m <sup>3</sup>	<b>Free Deck Space</b>	91.5m <sup>2</sup> (12.2m×7.5m)
<b>Fresh Water Tank</b>	20.80m <sup>3</sup>		

## Others

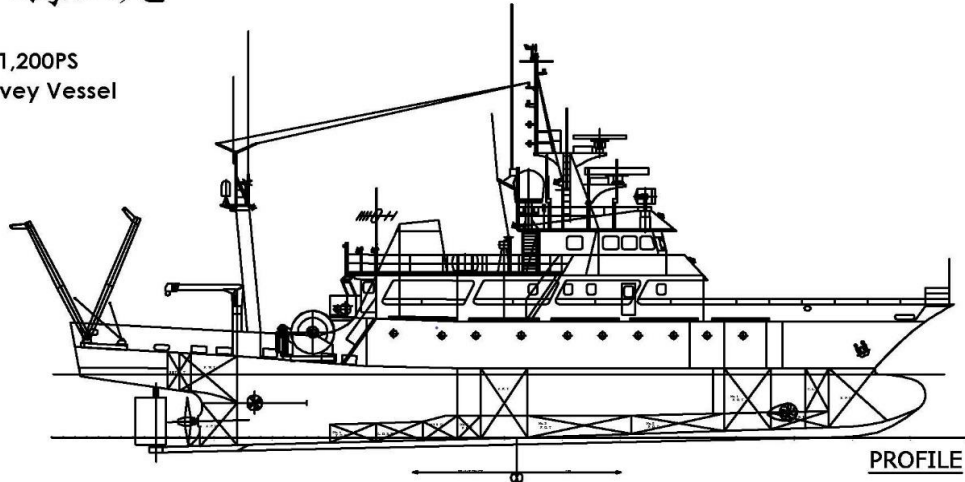
**Dedicated Work Space** 2 rooms (1.2m×2.8m / 1.9m×1.7m)



# KAIKO MARU No.8

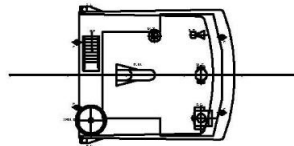
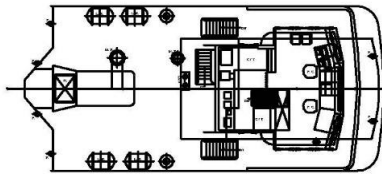
/ 第八海工丸

189G/T - 1,200PS  
Work / Survey Vessel

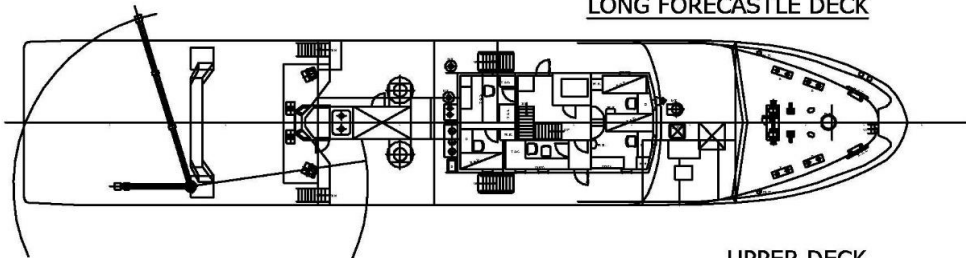


NAVIGATION BRIDGE DECK

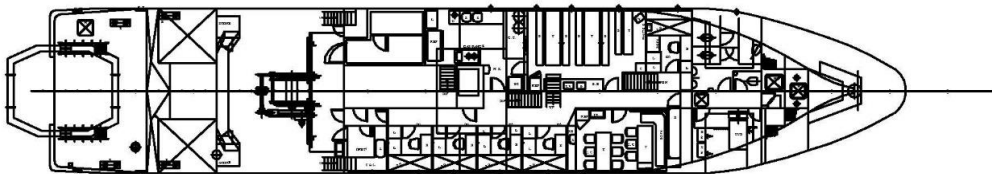
COMPASS DECK



LONG FORECASTLE DECK



UPPER DECK



TWEEN DECK

